

## GNC Uniform sizing guide

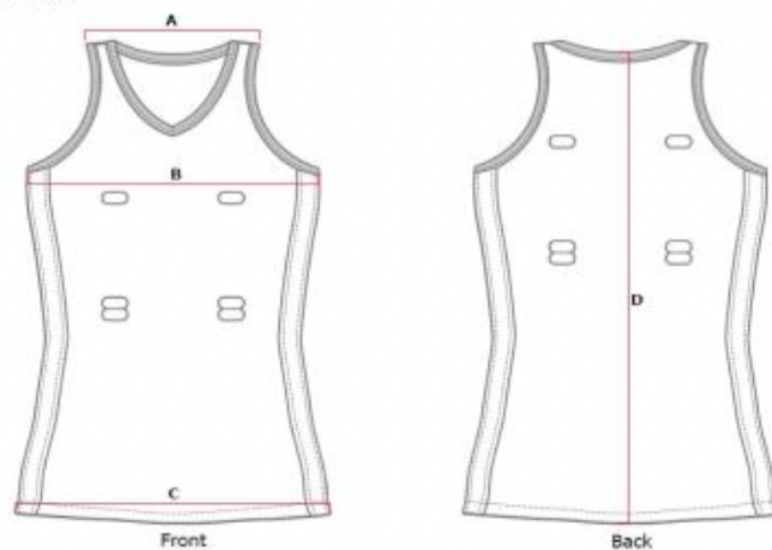
**Please note:** sizes vary across the range and may not be consistent across individual items eg. A size 10 dress will size differently to a size 10 singlet top

### Dresses

| Measurements in cm     | Size 2 | 4  | 6  | 8  | 10 | 12 | 14 | 16 | 18 | 20 | 22 | 24 | 26 | 28 | 30 |
|------------------------|--------|----|----|----|----|----|----|----|----|----|----|----|----|----|----|
| Shoulder (A)           | 18     | 19 | 20 | 21 | 22 | 23 | 24 | 25 | 26 | 28 | 29 | 30 | 31 | 33 | 34 |
| ½ Chest (B)            | 24     | 26 | 29 | 31 | 34 | 36 | 39 | 41 | 44 | 46 | 49 | 51 | 54 | 56 | 59 |
| ½ Hem (C)              | 42     | 45 | 48 | 50 | 53 | 55 | 58 | 60 | 63 | 65 | 68 | 70 | 74 | 75 | 78 |
| Centre back length (D) | 61     | 64 | 67 | 69 | 72 | 74 | 77 | 79 | 82 | 84 | 87 | 90 | 92 | 94 | 97 |

## GARMENT SPECIFICATION

Pattern 606 - Netball Dress - ladies



### Singlet Top - Ladies

| Measurement in cm    | Size 2 | 4  | 6  | 8    | 10   | 12 | 14   | 16   | 18   | 20 | 22 | 24 |
|----------------------|--------|----|----|------|------|----|------|------|------|----|----|----|
| ½ Chest (B)          | 37     | 39 | 41 | 43   | 45   | 47 | 49   | 51   | 53   | 55 | 57 | 59 |
| Back Length (D)      | 55     | 57 | 59 | 60.5 | 62   | 64 | 66.5 | 68.5 | 71.5 | 74 | 76 | 78 |
| Shoulder (A)         | 23     | 24 | 25 | 26   | 26.5 | 27 | 28   | 29   | 30   | 31 | 32 | 33 |
| ½ Hip/Bottom hem (C) | 41     | 43 | 45 | 46   | 47   | 48 | 50   | 53   | 55   | 57 | 59 | 61 |

### Unisex Shorts

| Measurements in cm | Size 4 | 6  | 8  | 10 | 12 | 14 | 16 | S  | M  | L  | XL | 2XL | 3XL |
|--------------------|--------|----|----|----|----|----|----|----|----|----|----|-----|-----|
| ½ Waist            | 24     | 25 | 25 | 26 | 26 | 27 | 29 | 31 | 33 | 35 | 37 | 39  | 41  |
| ½ Hip              | 41     | 43 | 45 | 47 | 49 | 51 | 53 | 58 | 60 | 62 | 64 | 66  | 68  |
| Length             | 28     | 30 | 32 | 34 | 36 | 38 | 40 | 47 | 49 | 51 | 53 | 55  | 57  |

### Singlet Top – Mens/Unisex

| Measurement in cm | Size 4 | 6  | 8  | 10 | 12 | 14 | 16/XS | S  | M  | L  | XL | 2XL | 3XL | 4XL |
|-------------------|--------|----|----|----|----|----|-------|----|----|----|----|-----|-----|-----|
| ½ Chest           | 37     | 39 | 41 | 43 | 45 | 47 | 49    | 51 | 53 | 55 | 58 | 60  | 62  | 64  |
| Back length       | 52     | 55 | 57 | 59 | 61 | 63 | 65    | 67 | 69 | 71 | 73 | 75  | 77  | 79  |
| ½ Bottom hem      | 37     | 39 | 41 | 43 | 45 | 47 | 49    | 51 | 53 | 55 | 58 | 60  | 62  | 64  |

### Ladies Training top and umpire polos

| Measurements in cm | Size 8/S | 10/M | 12/L | 14/XL | 16/2XL | 18/3XL | 20/4XL |
|--------------------|----------|------|------|-------|--------|--------|--------|
| ½ Chest            | 46       | 48   | 50   | 52    | 54     | 56     | 58     |
| Back length        | 60       | 62   | 64   | 66    | 68     | 70     | 72     |
| ½ Waist            | 42       | 44   | 46   | 48    | 50     | 52     | 54     |
| ½ bottom hem       | 48       | 50   | 52   | 54    | 56     | 58     | 60     |

### Unisex Training top and umpire polos

| Measurement in cm | Size 2 | 4  | 6  | 8  | 10 | 12 | 14 | 16 | S  | M  | L  | XL | 2XL | 3XL |
|-------------------|--------|----|----|----|----|----|----|----|----|----|----|----|-----|-----|
| ½ Chest           | 36     | 38 | 40 | 42 | 44 | 46 | 48 | 50 | 52 | 54 | 56 | 60 | 62  | 64  |
| Back Length       | 46     | 48 | 51 | 54 | 57 | 60 | 63 | 66 | 69 | 71 | 73 | 76 | 79  | 81  |
| ½ Bottom hem      | 36     | 38 | 40 | 42 | 44 | 46 | 48 | 50 | 55 | 54 | 56 | 60 | 62  | 64  |